

Features & Benefits

Managers, supervisors and field technicians alike benefit from AgileAssets® Pavement Analyst's unique features:

Easy Access to data

Field engineers and managers have on-demand, remote access to PMS inventory, construction and structural history, and detailed network data via the web.

Custom Configuration

User-defined functional, structural and condition performance indicators along with the ability to define treatments, costs, and decision rules allow pavement management strategies to evolve long after initial implementation.

Distributed Work Planning

Work plans created at the central unit level can be distributed to field level operations management to be reviewed, modified and implemented -- upon approved.

Closed Loop Annual Planning

Flexible predictive capabilities are improved as new data is entered from surveys or completed work orders.

Integrated GIS

Visually locate each roadway and/or segment on a map relative to other geographic features.

Built-in Reporting

A powerful yet easy-to-use reporting engine allows user to generate informative reports in a variety of formats.

Pavement Analyst™

AgileAssets® Pavement Analyst assists decision-makers in the process of managing their road network(s). The newest release offers a 100% zero-footprint, browser-based user interface fully capable of storing, retrieving, and processing user-defined, pavement-related condition and inventory data. AgileAssets® Pavement Analyst allows users to easily analyze current conditions, future performance, and expected needs for a pavement network.

Focus on pavement infrastructure is shifting from capital investment in new facilities to the management and preservation of existing assets. Both the public and elected representatives demand smoother pavements and wiser investments of limited transportation funds. AgileAssets recognizes that the health of a road network is greatly influenced by how well project treatments and timing are selected.

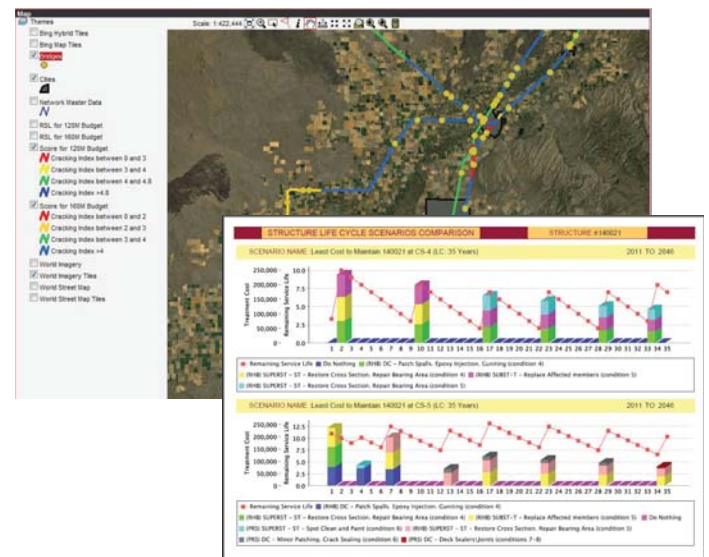
AgileAssets® Pavement Analyst simplifies forecasting and resource allocation by providing multiple analysis scenario capabilities. Efficient management summaries and easy to understand graphical reports allow managers to compare proposed work programs based on agency specific criteria. AgileAssets configures its commercial systems according to your unique business practices and needs, and trains your personnel to maximize the benefits of using this software system.

AgileAssets® Pavement Analyst offers flexible configuration, incorporating agile concepts including:

- Client-specific data types
- User-defined setup parameters
- Flexible, user-defined decision trees, treatments, and costs
- Performance modeling from your historical data
- Multiple analysis scenarios for "What-if" comparisons
- Integrated enterprise-wide asset databases

The Answers You Need

AgileAssets® Pavement Analyst offers advanced pavement management technology to assist decision-makers in the process of managing pavement networks of any size. The system stores, retrieves and processes user-defined, pavement-related condition and inventory data in order to analyze current conditions, predict future performance and determine the expected needs of your pavement network.



Eight main components comprise the AgileAssets® Pavement Analyst comprehensive pavement management system:

- Network Optimization
- Work Program Management
- Pavement Management Database
- Project Life Cycle Cost Analysis
- Network Scenario Analysis
- Pavement Performance Analysis
- Graphing, Reporting, and GIS Maps
- System Calibration and Setup

The Answers When You Need Them

Based on your setup, configuration and historical data, the network analysis and performance modeling tools assist you in allocating available budgets based on desired quality and condition levels. The ability to compare multiple analysis scenarios, using different objective criteria, provides you flexibility to develop cost-effective, policy-oriented work programs. Realistic pavement performance models are essential to the reliability of pavement management network and project analysis. AgileAssets® Pavement Analyst uses historical information harvested from past condition data to develop models for user-defined performance classes. The performance models are continuously improved and re-calibrated using each year's new data collection cycle and adjusted as necessary by experienced engineers familiar with an agency's pavement performance.

Network analysis allows you to examine the overall needs of your pavement network. Flexible decision trees help to identify proper treatments for each pavement section according to its condition, climate, traffic levels, and agency policy. You can estimate pavement preservation needs and distribute available budgets using our analysis techniques.

Factors including jurisdiction, functional class, and budget category are used to specify the analysis scope. AgileAssets® Pavement Analyst's intuitive user-interface allows you to adjust the analysis definition, immediately seeing the recommended work program, and the resulting estimated network condition distribution.

Flexible Configuration

During software configuration, AgileAssets works with your agency's staff to define detailed reporting requirements. These requirements are added to the software in the form of standard reports. AgileAssets also provides ad-hoc reporting tools that enable users to modify existing reports and add new reports to the standard report library. The updated standard report library is stored in the database and is immediately available to all users.

Graph definition windows produce custom graphical reports formatted to your specifications with easy access to database functions such as sort, filter and query. AgileAssets utilizes graphs throughout its reporting tools.

For large, complex highway networks or city streets, AgileAssets® Pavement Analyst is the best available system for managing pavement assets. Its browser-based architecture is ideally suited for collaboration and communication among multiple users who are responsible for various aspects of pavement management and engineering.